

Specification

Nominal Voltage	12V	
Nominal Capacity(20HR)	120.0AH	
Dimension	Length	410±3mm (16.14 inches)
	Width	177±2mm (6.97 inches)
	Container Height	225±3mm (8.86 inches)
	Total Height (with Terminal)	225±3mm (8.86 inches)
Approx Weight	Approx 33.5 kg (± % 3)	
Design Life	10 year for standby use	
Container Material	ABS	
Rated Capacity	120.0 AH/6.00A	(20hr, 1.80V/cell, 25°C/77°F)
	102.3 AH/10.23A	(10hr, 1.75V/cell, 25°C/77°F)
	88.0 AH/17.6A	(5hr, 1.75V/cell, 25°C/77°F)
	76.5 AH/25.5A	(3hr, 1.75V/cell, 25°C/77°F)
	60.5 AH/60.5A	(1hr, 1.67V/cell, 25°C/77°F)
Max. Discharge Current	990A (5s)	
Internal Resistance	Approx 4.8mΩ	
Operating Temp. Range	Discharge	-20~55°C (-4~131°F)
	Charge	0~40°C (32~104°F)
	Storage	-20~50°C (-4~122°F)
Nominal Operating Temp. Range	25±3°C (77±5°F)	
Cycle Use	Initial Charging Current less than 27.5A. Voltage	
	14.4V~15.0V at 25°C(77°F)Temp. Coefficient -30mV/°C	
Standby Use	No limit on Initial Charging Current Voltage	
	13.5V~13.8V at 25°C(77°F)Temp. Coefficient -20mV/°C	
Capacity affected by Temperature	40°C (104°F)	103%
	25°C (77°F)	100%
	0°C (32°F)	86%
Self Discharge	EG series batteries may be stored for up to 9 months at 25°C(77°F) and then a freshening charge is required. For higher temperatures the time interval will be shorter.	



Applications

- ◆ Telecommunications
- ◆ Solar system
- ◆ Wind power system
- ◆ Engine starting
- ◆ Wheelchair
- ◆ Floor cleaning machines
- ◆ Golf trolley
- ◆ Boats



Constant Current Discharge (Amperes) at 25 °C (77°F)

F.V/Time	20min	30min	45min	1h	2h	3h	4h	5h	6h	7h	8h	9h	10h	20h
1.85V/cell	93.1	73.0	55.7	46.6	29.6	22.6	18.7	16.1	13.9	12.3	11.1	10.2	9.60	5.48
1.80V/cell	106.6	81.6	61.5	51.5	32.0	24.2	19.8	16.9	14.6	12.9	11.6	10.7	10.0	6.00
1.75V/cell	119.8	89.8	66.4	55.1	33.9	25.5	20.7	17.6	15.1	13.4	12.0	11.0	10.23	6.21
1.70V/cell	129.0	96.1	70.5	58.3	36.0	26.6	21.4	18.2	15.7	13.8	12.4	11.3	10.5	6.38
1.67V/cell	134.3	99.9	73.0	60.5	36.9	27.4	21.9	18.5	15.9	14.0	12.6	11.4	10.6	6.54
1.60V/cell	145.5	106.9	78.5	64.2	38.4	28.5	22.8	19.1	16.3	14.3	12.8	11.7	10.8	6.65

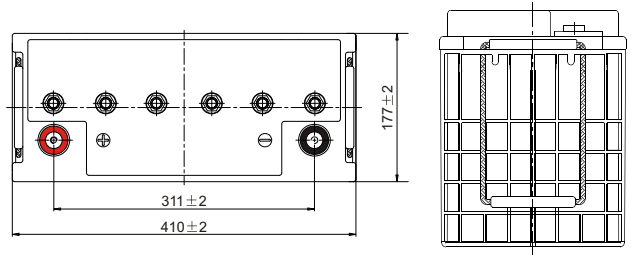
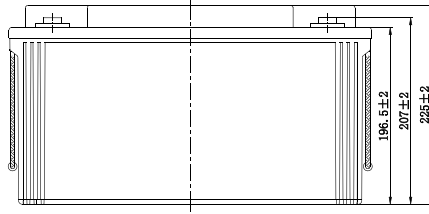
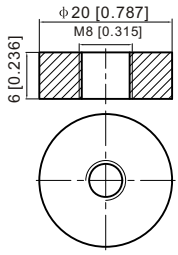
Constant Power Discharge (Watts/cell) at 25 °C (77°F)

F.V/Time	20min	30min	45min	1h	2h	3h	4h	5h	6h	7h	8h	9h	10h	20h
1.85V/cell	178.1	140.7	108.1	90.8	57.8	44.2	36.7	31.8	27.6	24.5	22.1	20.2	19.1	10.5
1.80V/cell	201.3	155.8	118.3	99.7	62.3	47.2	38.8	33.3	28.8	25.5	23.1	21.2	20.0	11.0
1.75V/cell	223.8	169.8	127.0	106.2	65.8	49.7	40.5	34.5	29.8	26.4	23.8	21.8	20.3	11.2
1.70V/cell	238.4	180.3	133.8	111.7	69.4	51.6	41.7	35.5	30.7	27.2	24.5	22.4	20.8	11.3
1.67V/cell	245.4	185.3	137.6	115.3	70.9	53.0	42.6	36.1	31.2	27.5	24.8	22.6	21.0	11.4
1.60V/cell	263.0	196.5	146.7	121.7	73.4	54.9	44.1	37.1	31.8	28.0	25.2	23.1	21.4	11.5

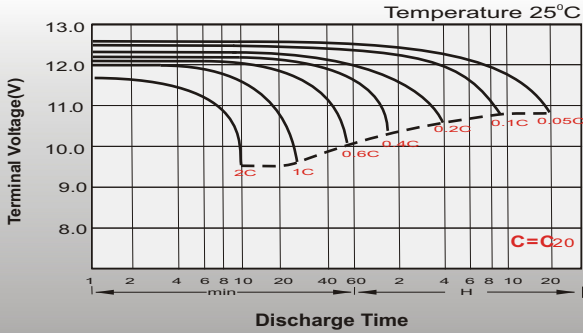
Dimensions

T11 Terminal

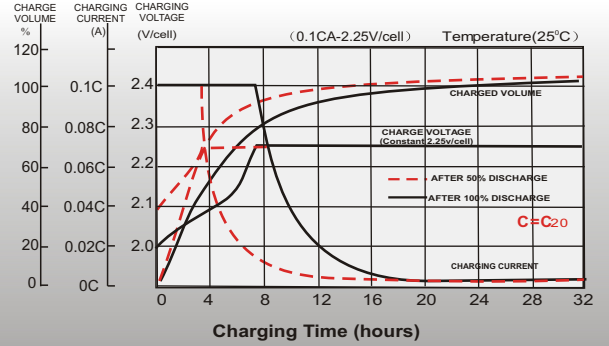
Unit: mm [inches]



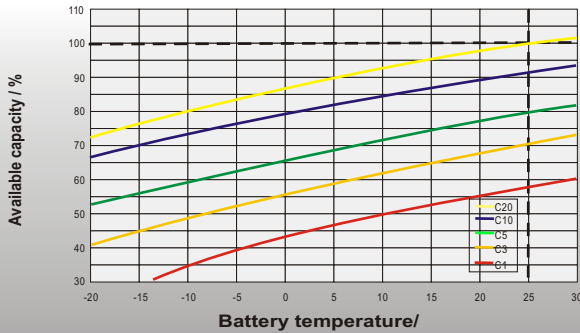
Discharge Characteristics



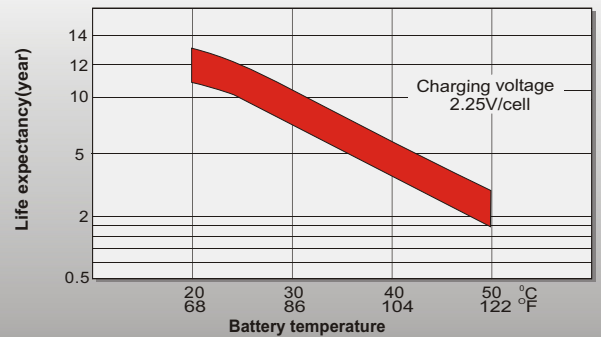
Float Charging Characteristics



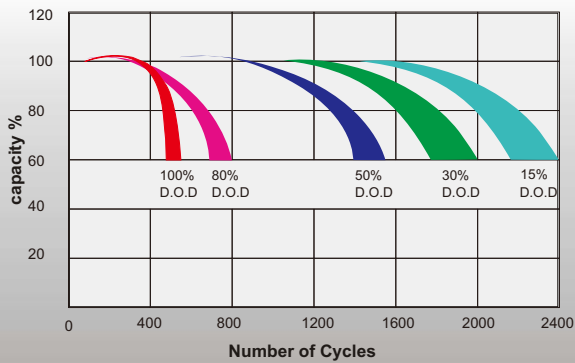
Temperature Effects in Relation to Battery Capacity



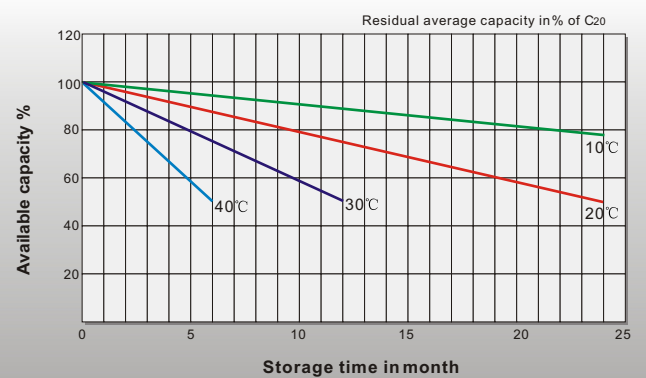
Effect of Temperature on Long Term Float Life



Cycle Life in Relation to Depth of Discharge



General Relation of Capacity VS. Storage Time



Sales Office

Specifications subject to change without notice.



ZAFER ENERGY SYSTEMS IND.&FOREIGN TRADE CO.LTD.

Head Office

BEYLİKDUZU O.S.B MERMERCILER SAN SIT. 9. CAD. NO:18

BEYLİKDUZU/İSTANBUL

TEL : +90(212)632 77 75

FAX : +90(212)632 05 87

WEB : <http://www.zaferenergy.com>